

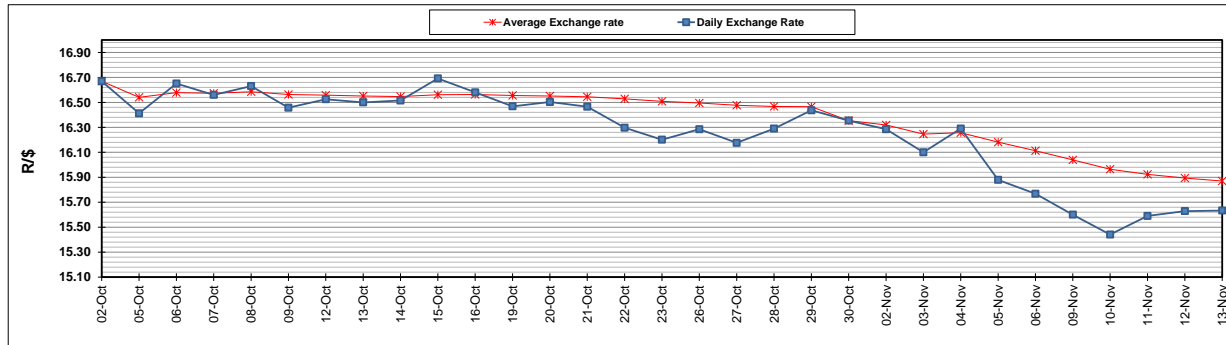
	PETROL 95 ULP	PETROL 93 ULP & LRP	DIESEL 0.05%	DIESEL 0.005%	ILL. PAR.
GAUTENG PUMP PRICE (SA c/l) AS FROM 04/11/2020	1,459.000	1,439.000	-	-	-
WHOLESALE PRICE (SA c/l) AS FROM 04/11/2020	-	-	1,225.560	1,227.960	655.828
SINGLE NATIONAL MAXIMUM RETAIL PRICE	-	-	-	-	818.000
BASIC FUEL PRICE - 13/11/2020 (SA c/l)	483.012	475.119	488.652	490.180	468.695
PRESS RELEASE CONTRIBUTION TO BFP 04/11/2020 - 13/11/2020 (SA c/l)	506.470	496.470	474.630	477.030	451.128
UNIT OVER/(UNDER) RECOVERY - 13/11/2020 (SA c/l)	23.458	21.351	(14.022)	(13.150)	(17.567)
AVERAGE BASIC FUEL PRICE 30/10/2020 - 13/11/2020	477.968	469.634	473.373	476.025	457.023
AVERAGE UNIT OVER/(UNDER) RECOVERY 30/10/2020 - 13/11/2020	35.866	34.200	4.530	4.005	(9.986)

ANALYSIS MOVEMENT OF AVERAGE OVER/(UNDER) RECOVERY

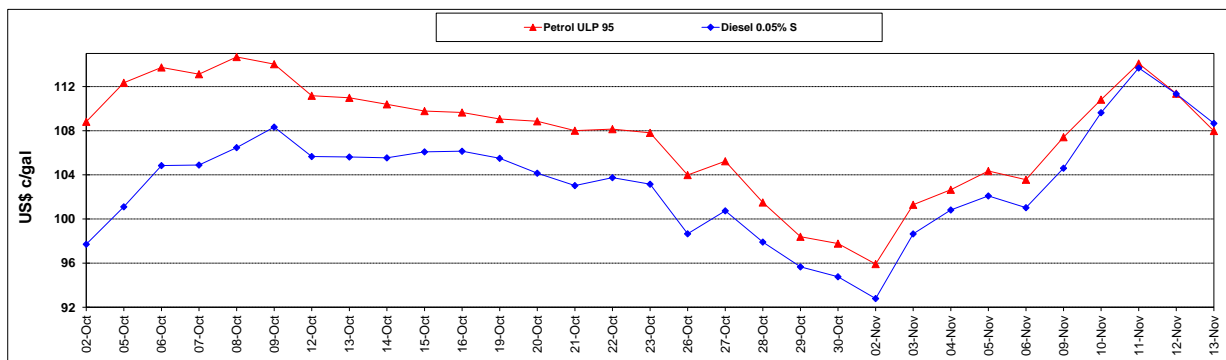
	PETROL 95	PETROL 93	DIESEL 0.05%	DIESEL 0.005%	ILL. PAR.
- MOVEMENT IN INTERNATIONAL PRODUCT PRICES	17.922	16.569	(13.242)	(13.866)	(27.144)
- MOVEMENT IN EXCHANGE RATE	17.944	17.631	17.772	17.871	17.158
AVERAGE UNIT OVER/(UNDER) RECOVERY 30/10/2020 - 13/11/2020	35.866	34.200	4.530	4.005	(9.986)

R/\$ EXCHANGE RATE - (R/\$15.6333 - 13/11/2020)

EXCHANGE RATE USED IN BASIC FUEL PRICE



INTERNATIONAL PRODUCT PRICES OF BASKET USED IN BASIC FUEL PRICE



BASIC FUEL PRICE IN SA CENTS PER LITRE

